

Academic Year Evaluation 2021/2022



Content

1. Overview

2. Evaluation

2.1 Response Rates

2.2 General evaluation of the Study Programme

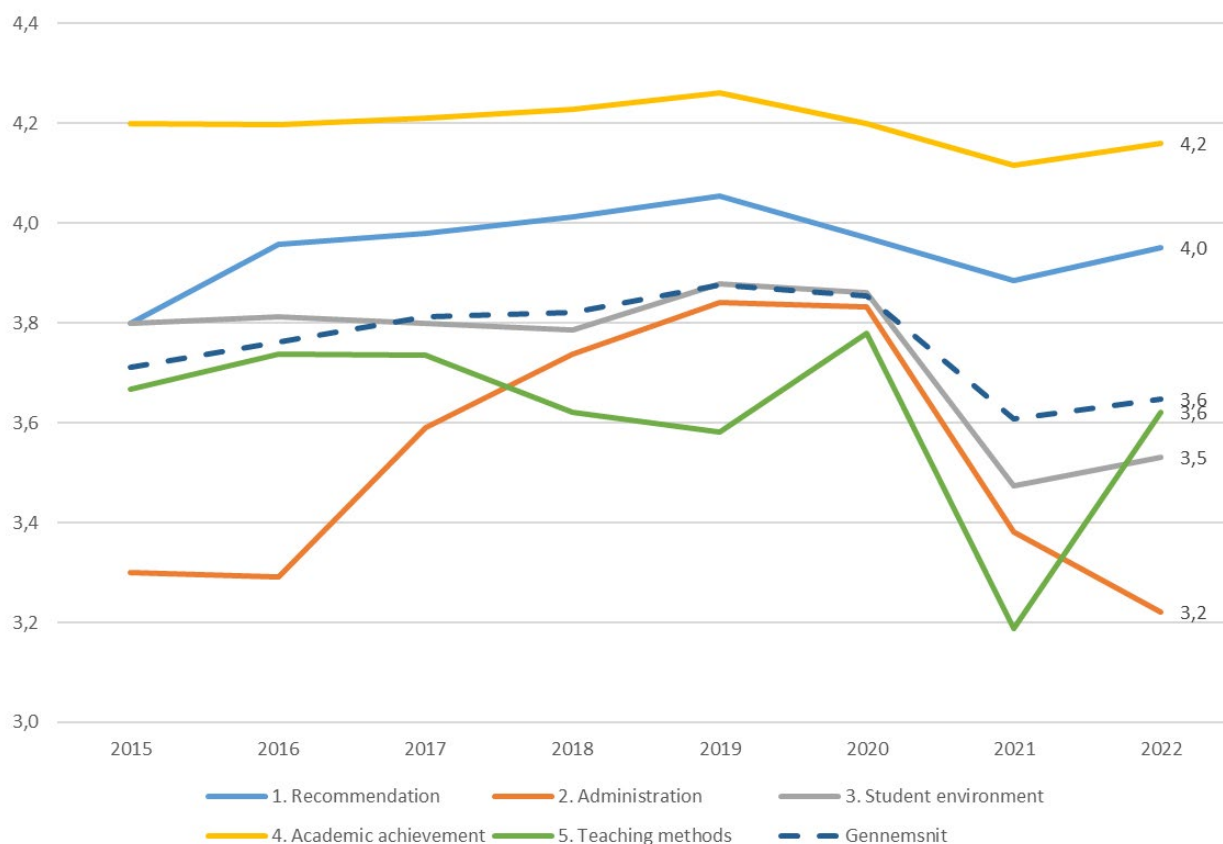
2.4 Satisfaction with the administration

2.4 Study environment

2.5 Academic competences and context

1. Overview

The answers are given on a scale from 1 to 5 where 1 is "Completely disagree" and 5 is "Completely agree".



- | | |
|--|--|
| 1. Recommendation/anbefaling: | "I highly recommend my study programme to others" |
| 2. Administration: | "Overall, I am satisfied with the service from the administration" |
| 3. Student environment/Studiemiljø: | "The programme's social environment is good" |
| 4. Academic achievement/Fagligt udbytte: | "The academic year has been intellectually challenging" |
| 5. Teaching methods/Undervisning | "The teaching methods in this academic year were appropriate in achieving the academic objectives" |
| 6. Average/Gennemsnit: | Overall average score for the five indicators |

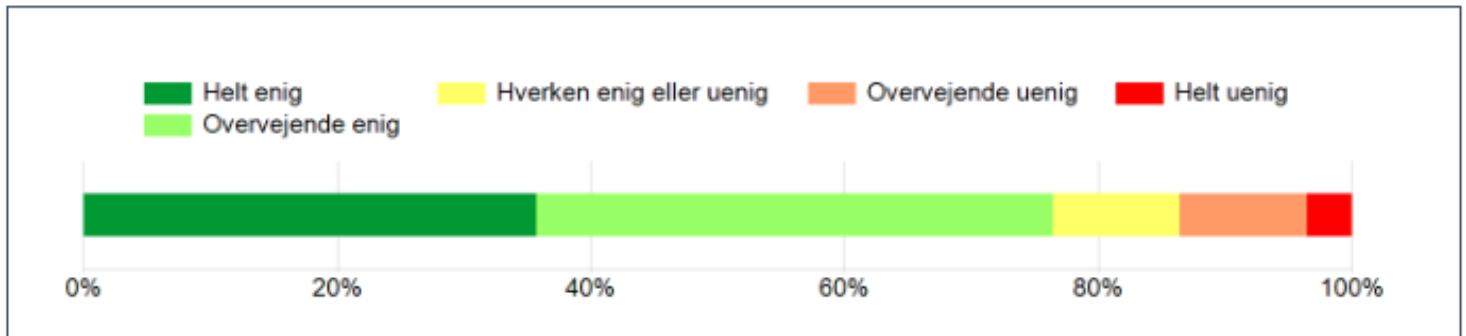
2. Evaluation

2.1. Response Rates

Raters	Students
Responded	1676
Invited	13178
Response Ratio	12.7%

2.2. General evaluation of the programme

I highly recommend my study programme to others

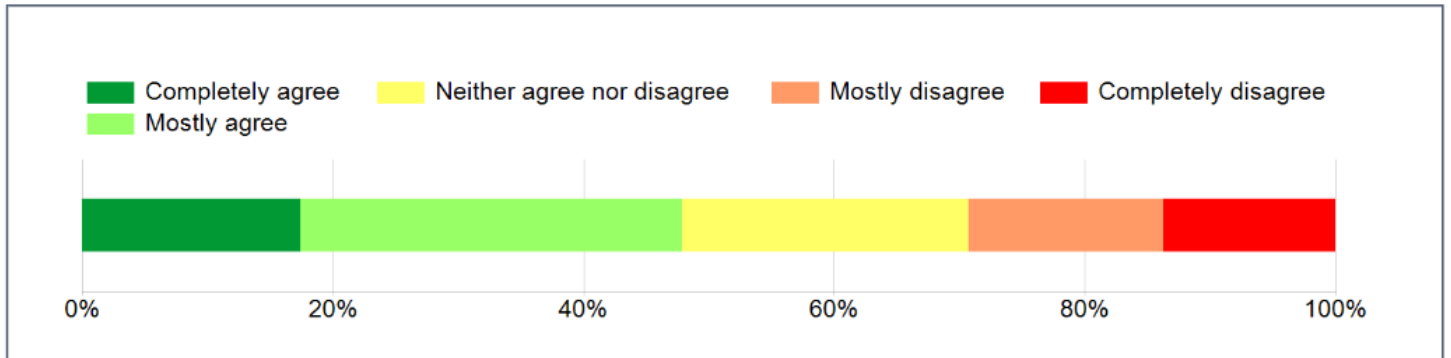


Please indicate whether you agree or disagree with the following statements:

	N	Completely agree	N	Mostly agree	N	Neither agree nor disagree	N	Mostly disagree	N	Completely disagree	Mean
I highly recommend my study programme to others	595	35.7%	681	40.8%	165	9.9%	168	10.1%	60	3.6%	3.9

2.3. Satisfaction with the administration

Overall I am satisfied with the service from the administration

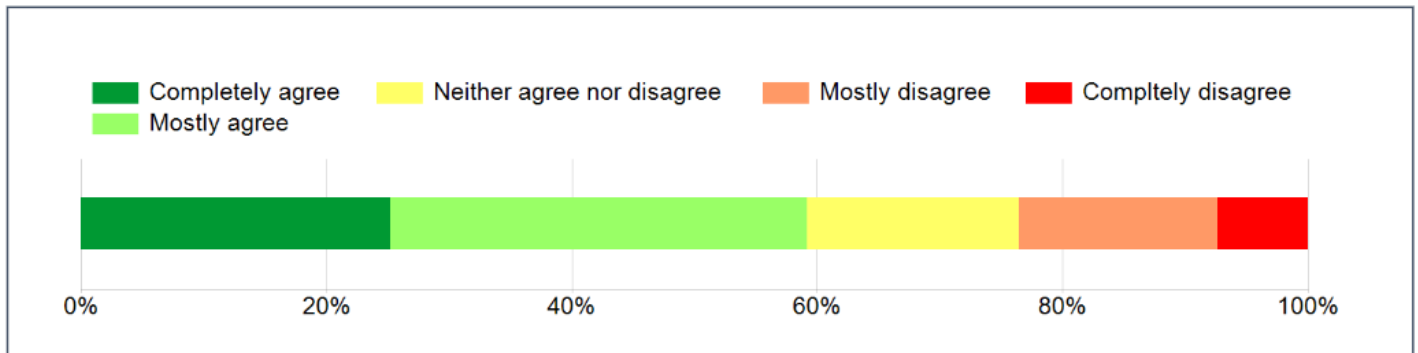


Please indicate whether you agree or disagree with the following statements:

	N	Completely agree	N	Mostly agree	N	Neither agree nor disagree	N	Mostly disagree	N	Completely disagree	Mean
Overall I am satisfied with the service from the administration	266	17.4%	466	30.5%	348	22.8%	238	15.6%	209	13.7%	3.2

2.4. Study Environment

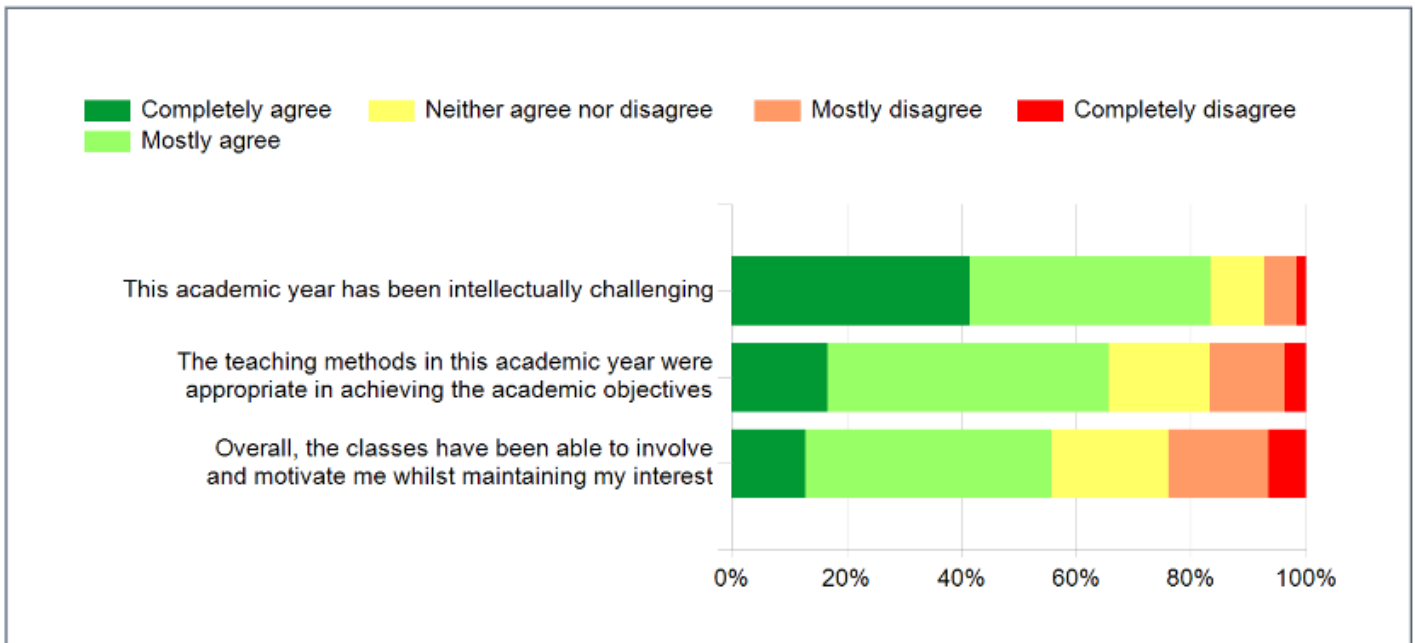
The programme's social environment is good



Please indicate whether you agree or disagree with the following statements

	N	Completely agree	N	Mostly agree	N	Neither agree nor disagree	N	Mostly disagree	N	Completely disagree	Mean
The programme's social environment is good	410	25.2%	555	34.0%	282	17.3%	263	16.1%	120	7.4%	3.5

2.5. Academic competences and context



Please indicate whether you agree or disagree with the following statements

	N	Completely agree	N	Mostly agree	N	Neither agree nor disagree	N	Mostly disagree	N	Completely disagree	Mean
This academic year has been intellectually challenging	692	41.5%	700	42.0%	155	9.3%	91	5.5%	29	1.7%	4.2
The teaching methods in this academic year were appropriate in achieving the academic objectives	277	16.8%	805	48.9%	289	17.6%	214	13.0%	61	3.7%	3.6
Overall, the classes have been able to involve and motivate me whilst maintaining my interest	213	12.9%	704	42.8%	334	20.3%	288	17.5%	107	6.5%	3.4